

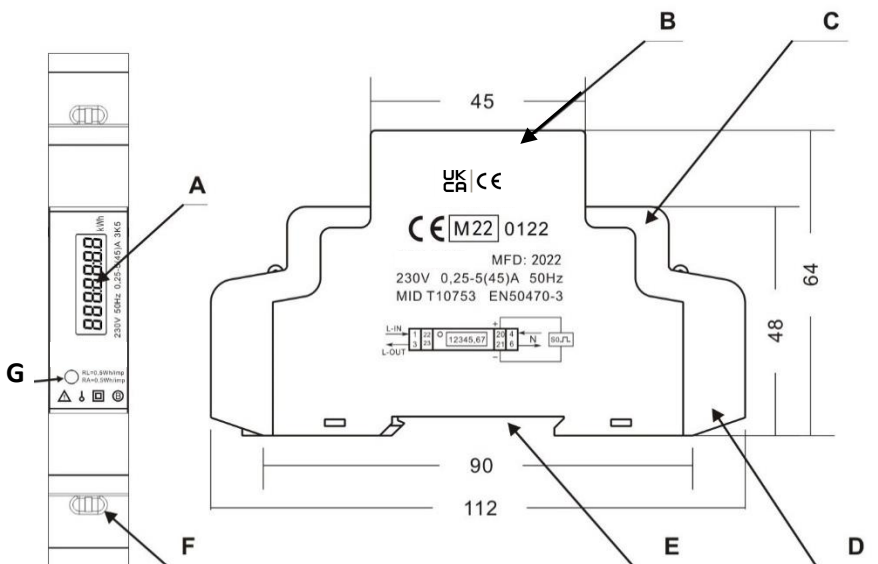
Single Phase kWh Meter (MID certified)



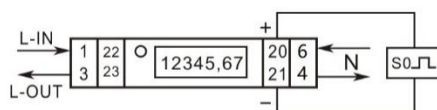
Single phase MID certified energy meter suitable for domestic , commercial and industrial single phase applications up to 45A direct connected.

Single module, din rail mounting, compact design with easy to read backlit LCD display and pulse output.

Part Number	KWH1M45
Barcode	5060523525089
Maximum rated current (Imax)	45A
Nominal Voltage(Un)	230V/ 50Hz
IP RATING Terminals	IP20 EN 60529
Mounting	35mm top hat din rail
Torque (switch terminals)	0.8Nm
Maximum cable	10mm ²
Complies with	EN 50470-3



- A LCD display
- B Casing
- C Terminals
- D Terminal cover
- E Din rail mounting
- F Terminal cover security seal
- G RED LED Consumption indicator



Connections

Important: Torque all terminals!

TECHNICAL**1 Specifications:**

Meter type	DRS-205A/D series
Operational voltage	195-253V AC
Insulation capabilities:	
- AC voltage withstand	4KV for 1 minute
- Impulse voltage withstand	6KV – 1.2μS waveform
Basic current (I _b)	5A
Maximum rated current (I _{max})	45A
Operational current range	0.4% I _b - I _{max}
Over current withstand	30I _{max} for 0.01s
Operational frequency range	50Hz ±10%
Internal power consumption	≤2W /phase- ≤10VA/phase
Test output flash rate (RED LED)	1000/2000imp/kWh
Pulse output rate (pins 20 & 21)	1000/2000imp/kWh
Pulse Output	Passive transistor 5-27V DC to 20 (anode) and the signal wire (S) to 21 (cathode).
Pulse Output maximum current	27mA
Consumption indicator (RED LED)	Flash on load

2 Performance criteria:

Operating humidity	≤ 75%
Storage humidity	≤ 95%
Accuracy class	B
IP Rating product	IP51
Insulating encased meter of protective class	II

3 Dimensions

Height	112 mm
Width	17.5 mm
Depth	64 mm
Weight	0.12 Kg (net)

4 Basic errors:

0.05I _b	Cosφ = 1	±1.5%
0.1I _b	Cosφ = 0.5L	±1.5%
	Cosφ = 0.8C	±1.5%
0.1I _b - I _{max}	Cosφ = 1	±1.0%
0.2I _b - I _{max}	Cosφ = 0.5L	±1.0%
	Cosφ = 0.8C	±1.0%

5 Environment

WASTE ELECTRICAL PRODUCTS SHOULD NOT BE DISPOSED OF IN HOUSEHOLD WASTE. CONTACT YOUR RETAILER OR LOCAL AUTHORITY FOR RECYCLING INFORMATION.

